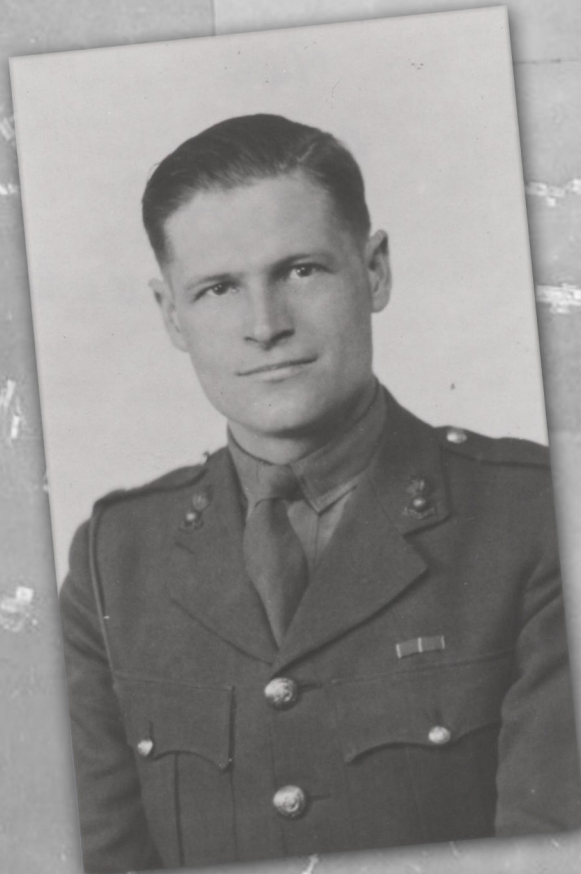
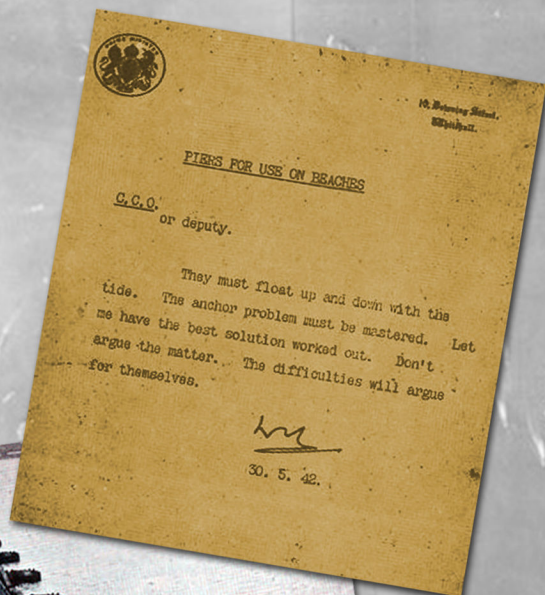


The Mulberry harbours were floating harbours towed across the English Channel and assembled on the Normandy coast immediately after D-day. They enabled large quantities of armour and supplies to be brought ashore quickly. These supplies were essential in the battle to liberate Europe.



The Allan Beckett memorial window

Allan Beckett was an eminent civil engineer who had a major role in the design and construction of the Mulberry harbours. He was an expert in port and harbour design and after the war was responsible for the development of many ports throughout the world.

He was a generous benefactor of this church.

He was a keen sailor who loved the Swale. For over 30 years he kept a yacht at Harty Ferry.



St Peter's Church, Oare

There were two harbours: Mulberry A (American) and B (British). Mulberry A was destroyed in a storm two weeks after D-day. Mulberry B was repaired and continued in use for five months until the harbour at Antwerp was captured. Mulberry B was, during this period, the busiest port in the world.

The Allan Beckett memorial window, St Peter's Church, Oare

Allan Beckett designed the floating roadways and supervised their installation on the Normandy beaches. The roadways enabled heavy traffic to be brought ashore from deep water shipping.

Six miles of roadway were constructed for use at Mulberry. The remains of Mulberry B can still be seen at Arromanches in Normandy where there is an excellent museum on the waterfront. A Kite anchor and a section of roadway are on display there.



The window was designed and made by Petri Anderson, 2011



'The leaves of the trees are for the healing of the nations'

Revelation 22:2

The Mulberry tree is not native to the British Isles and many were introduced from the Orient in the 16th century. They can be very long lived, and there is a mulberry tree in the grounds of Canterbury Cathedral said to have been present in the time of Thomas a Becket (died 1170).

The Kite anchor was invented by Allan Beckett to secure the floating roadway.

There was no other suitable anchor available. The Kite anchor had a greater holding power for its weight than any other type.

Two thousand anchors were made for use in the Mulberry harbours

